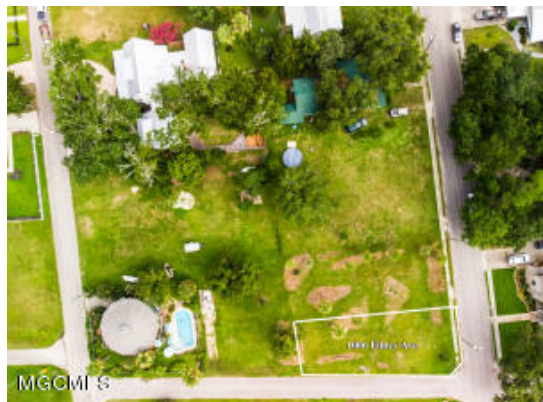


364144

1006 Finley St, Long Beach, MS 39560
Lots/Acreage/Farm Active



List Price: \$40,000

List Price Sqft:

Acreage: 0.12

Sub-Type: Single Family Lot

Parcel #: 0711n-05-013.000

Lot Dimensions: 125x34x124x50

Subdivision: Ocean Wave

County: Harrison

Zoning:

N or S of CSX: South

RR:

N or S of I-10: South

Sub Agency: No

Legal: LOTS 39 & 40 BLK 2 OCEAN WAVE ADD.

Directions to Property: Hwy. 90 to Central Ave to Finley St.

Condo/HO Assn Fee:

Condo/HO Fee Frequency:

Potential Short Sale: No

Short Sale Info: N/A

3rd Party/Bank Owned: No

Estimated Annual Taxes:

School District: Long Beach

Elementary School:

Junior/Middle School: Long Beach

Senior High School: Long Beach

Remarks: Great building lot at the corner of Finley St. and Central Ave. Cleared and level. Please see MLS #364139, 176 Central Ave.. Buyer to buy both lots.

Topography: Cleared; Level

Trees:

Minerals: No Minerals

Type Farm:

Fences:

Restrictions:

Waterfront: Near Beach; Water View

Utilities Available: Electricity; Gas; Phone; Sewer; Water

Buildings On Site:

Recreation/Amenities: Near Entertainment

Utilities on Site: Municipal Sewer; Municipal Water; Water

Livestock:

Equipment Included:

ACC Transportation: City Street

Documents on File: Plat

Showing Instructions: Call LA for Appt.; Vacant Property

Sale Options:

Acceptable Financing: Cash; Conventional



Beth Arnold
Beth Arnold Realty, LLC
5130-A Beatline Rd.
Long Beach, MS 39560
228-861-7458
228-284-1700
betharnold.helpingyoubuyandsell@gmail.com
http://www.betharnold.net

Information is deemed to be reliable, but is not guaranteed. © 2020 MLS and FBS. Prepared by Beth Arnold, CRS,ABR,GRI on Thursday, August 13, 2020 1:39 PM. The information on this sheet has been made available by the MLS and may not be the listing of the provider.